



CATALOG OF REPLACEMENT PARTS



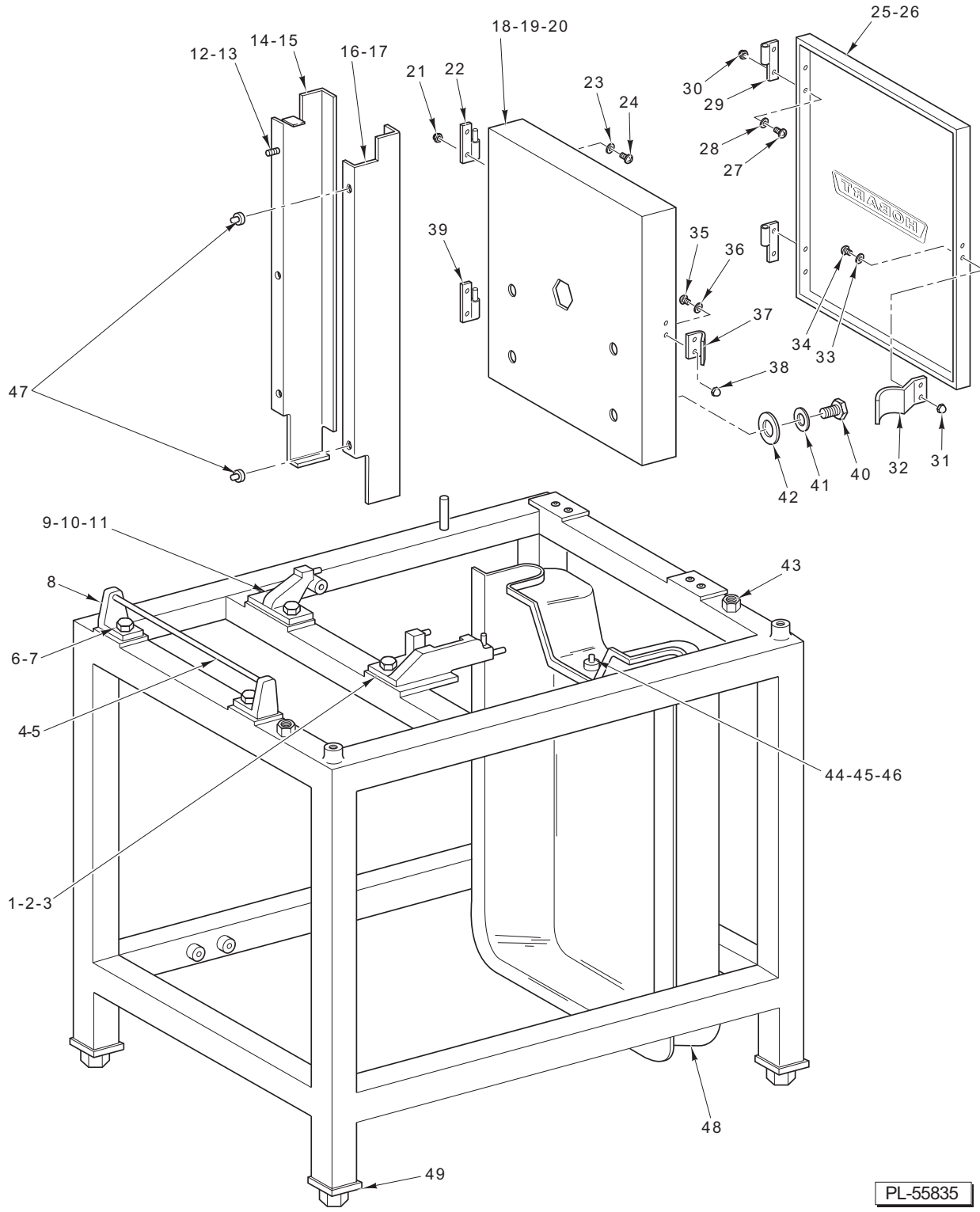
6614 MEAT SAW

ML-134096



6801 MEAT SAW

ML-134094

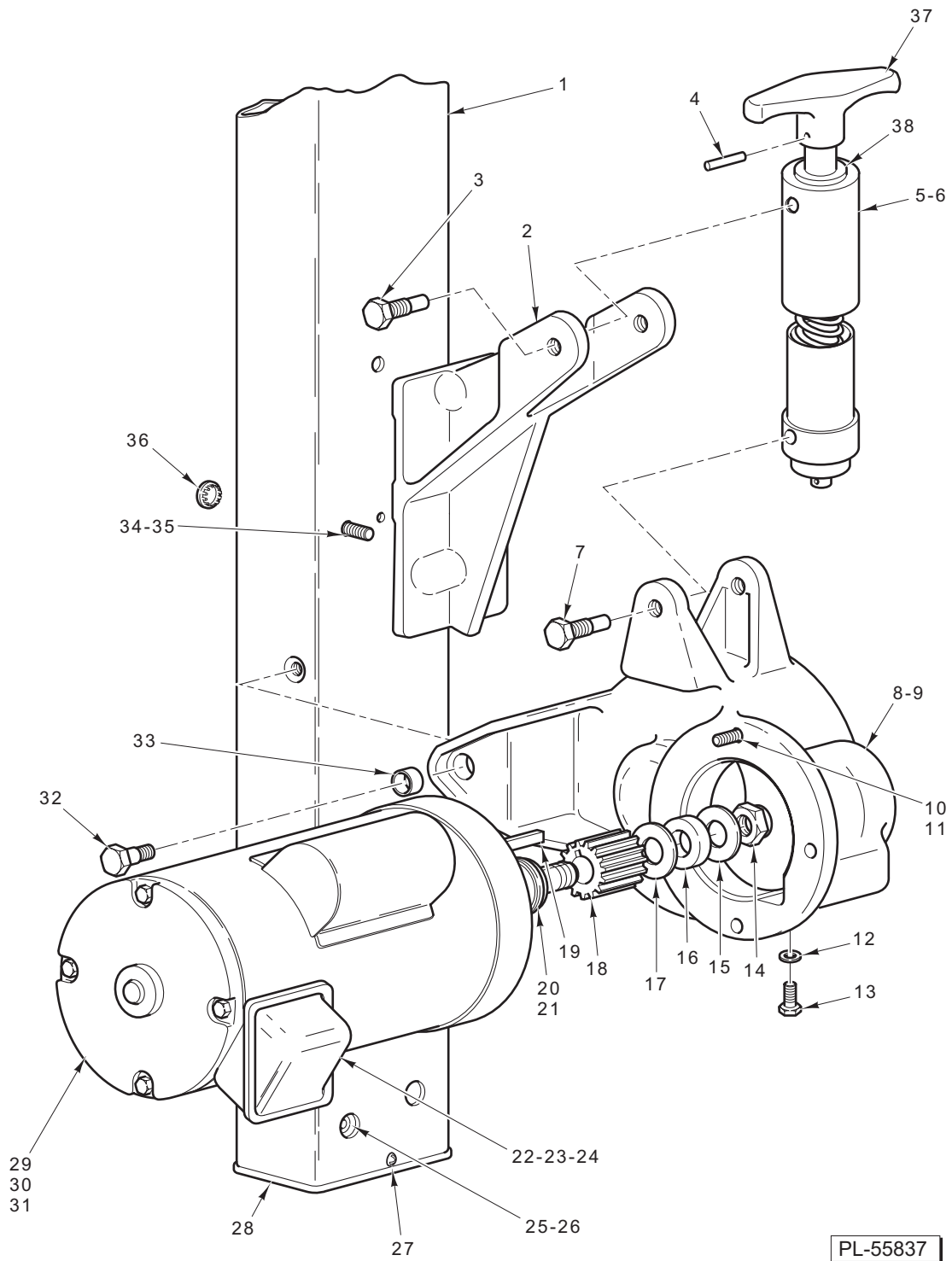


PL-55835

FRAME AND COVER

FRAME AND COVER

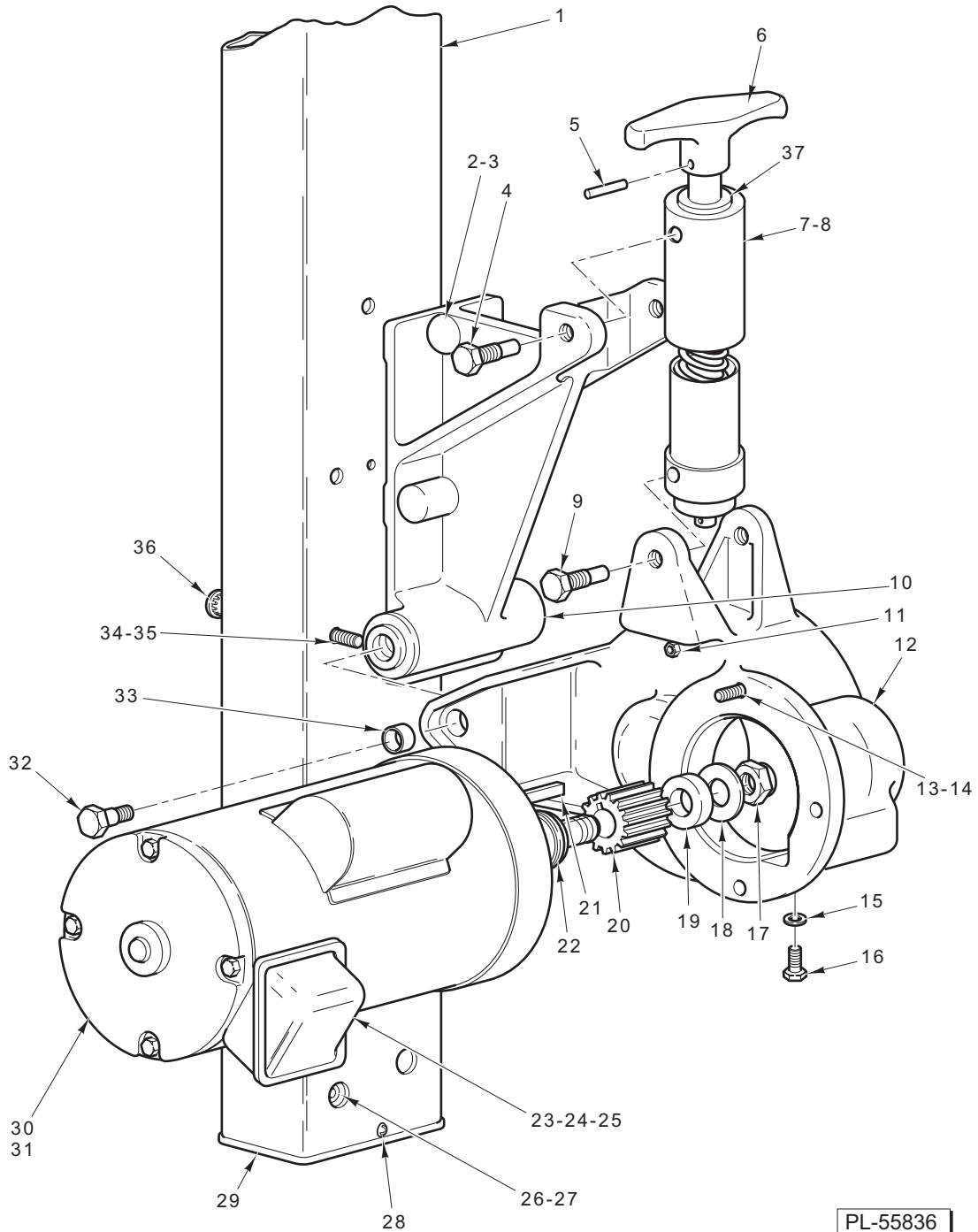
ILLUS.	PART NO.	NAME OF PART	AMT.
PL-55835			
1	00-291653	Lower Guide Support & Pin Assy.....	1
2	SC-041-31	Cap Screw 3/8-16 x 1 1/4 Hex Hd.....	2
3	WS-018-40	Washer.....	2
4	00-290758-00001	Rod – Anchor (Left Table) (Model 6801 ML-134094).....	1
5	00-290758-00003	Rod – Anchor (Left Table) (Model 6614 ML-134096).....	1
6	SC-041-31	Cap Screw 3/8-16 x 1 1/4 Hex Hd.....	2
7	WS-018-40	Washer.....	2
8	00-290751	Support – Left Table.....	2
9	00-290752	Table Lock & Pin Assy.....	1
10	SC-041-31	Cap Screw 3/8-16 x 1 1/4 Hex Hd.....	2
11	WS-018-40	Washer.....	2
12	SC-093-07	Mach. Screw 10-32 x 1/2 Pan Hd.....	3
13	WL-006-07	Lockwasher #10 Medium.....	3
14	00-875255	Guard – Column (Model 6801 ML-134094).....	1
15	00-875087	Guard – Column (Model 6614 ML-134096).....	1
16	00-875256	Guard – Removable (Model 6801 ML-134094).....	1
17	00-875088	Guard – Removable (Model 6614 ML-134096).....	1
18	00-873735	Upper Baffle Assy. (Incls. Items 20 thru 23 & 34 thru 38) (Model 6801 ML-134094).....	1
19	00-875112	Upper Baffle Assy. (Incls. Items 20 thru 23 & 34 thru 38) (Model 6614 ML-134096).....	1
20	00-873205	Baffle – Upper Pulley (SST) (Model 6801 ML-134094).....	1
21	NS-046-33	Acorn Nut 6-32 Hex.....	4
22	00-437788	Hinge – Upper Assy.	1
23	WS-028-03	Washer.....	4
24	SC-115-26	Mach. Screw 6-32 x 1/4 Slotted Pan Hd. (SST).....	4
25	00-479153	Upper Cover Assy. (Incls. Items 26 thru 33) (Model 6801 ML-134094).....	1
26	00-875111	Upper Cover Assy. (Incls. Items 26 thru 33) (Model 6614 ML-134096).....	1
27	SC-115-26	Mach. Screw 6-32 x 1/4 Slotted Pan Hd. (SST).....	4
28	WS-028-03	Washer.....	4
29	00-437378-00002	Hinge – Lift Off (W/O Pin).....	2
30	NS-046-33	Acorn Nut 6-32 Hex.....	4
31	NS-046-33	Acorn Nut 6-32 Hex.....	2
32	00-291502	Clip – Latch.....	1
33	WS-028-03	Washer.....	2
34	SC-021-07	Mach. Screw 6-32 x 1/4 Rd. Hd. Slotted.....	2
35	SC-021-07	Mach. Screw 6-32 x 1/4 Rd. Hd. Slotted.....	2
36	WS-028-03	Washer.....	2
37	00-437608	Clip – Retainer.....	1
38	NS-046-33	Acorn Nut 6-32 Hex.....	2
39	00-437787	Hinge – Lower Assy.	1
40	SC-041-50	Cap Screw 1/4-20 x 1/2 Hex Hd.....	4
41	WS-003-47	Washer.....	4
42	00-291763-00002	Washer – Rubber (Model 6801 ML-134094).....	4
43	00-875054	Screw – Jack (Model 6614 ML-134096).....	2
44	00-290860	Anchor – Lower Cover.....	1
45	SC-041-05	Cap Screw 1/4-20 x 5/8 Hex Hd.....	1
46	WS-003-47	Washer.....	1
47	00-436908	Pin – Anchor.....	2
48	00-875184	Cover – Lower (Incls. Items 42, 43, & 44) (Model 6801 ML-134094).....	1
49	00-435792	Foot (2 to 4 In. Adjustable Height).....	4



**DRIVE AND TENSION ADJUSTMENT UNIT
(MODEL 6614 ML-134096)**

**DRIVE AND TENSION ADJUSTMENT UNIT
(MODEL 6614 ML-134096)**

ILLUS. PL-55837	PART NO.	NAME OF PART	AMT.
1	00-875134-00001	Column & Label Assy.....	1
2	00-875047-00002	Transmission Support Assy.....	1
3	00-290832	Pivot – Tension Adjusting.....	2
4	RP-002-07	Roll Pin ³ / ₁₆ x 1 ¹ / ₄ Lg. (SST).....	1
5	00-873500	Tensioner Assy. (Incls. Items 4, 6, 37, & 38).....	1
6	BN-005-06	Needle Bearing – Torrington NTA-1018.....	1
7	00-290832	Pivot – Tension Adjusting.....	2
8	00-120971	Plug – Vent.....	1
9	00-875137	Gear Case Assy. (Incls. Items 8 & 33).....	1
10	SC-041-31	Cap Screw ³ / ₈ -16 x 1 ¹ / ₄ Hex Hd.....	3
11	WL-019-85	Lockwasher.....	3
12	WS-021-20	Washer.....	1
13	SC-036-93	Cap Screw ⁷ / ₁₆ -20 x ³ / ₄ Hex Hd.....	1
14	NS-046-29	Lock Nut ³ / ₄ -16 Flexlox.....	1
15	SL-005-02	Spring – Loading.....	1
16	00-290866	Washer – Damper.....	1
17	SL-005-02	Spring – Loading.....	1
18	00-875043	Pinion – Drive.....	1
19	00-109070-00008	Key.....	1
20	SL-005-02	Spring – Loading.....	2
21	00-290866	Washer – Damper.....	1
22	SC-027-29	Mach. Screw 8-32 x ³ / ₈ Rd. Hd.....	AR
23	WL-010-01	Lockwasher #8 External Shakeproof.....	AR
24	NS-010-11	Nut 8-32 Hex (Brass).....	AR
25	SC-040-21	Cap Screw ³ / ₈ -16 x ⁷ / ₈ Soc. Hd.....	4
26	WL-006-28	Lockwasher ³ / ₈ Helical.....	4
27	SD-038-03	Self-Tapping Screw 10-16 x ³ / ₄ Truss Hd.....	4
28	00-479134	End Cap.....	1
29	00-437301-00001	Motor (60 Hz.) (3 Ph.).....	1
30	00-437301-00003	Motor (50 Hz.) (3 Ph.).....	1
31	00-479005	Motor (1 Ph.).....	1
32	00-873986	Screw Shoulder.....	2
33	00-291859-00002	Bushing ³ / ₈ Lg.....	2
34	SC-040-21	Cap Screw ³ / ₈ -16 x ⁷ / ₈ Soc. Hd.....	5
35	WS-018-04	Washer.....	5
36	PB-005-15	Plug Button.....	11
37	00-875670	Knob – Tension Adjust.....	1
38	BB-021-45	Bearing – Thrust 0.6371.....	1
	00-875114-00001	Motor & Pinion Assy. (60 Hz.) (3 Ph.) (Incls. Items 14 thru 21 & 29).....	1
	00-875114-00003	Motor & Pinion Assy. (60 Hz.) (1 Ph.) (Incls. Items 14 thru 21 & 31).....	1

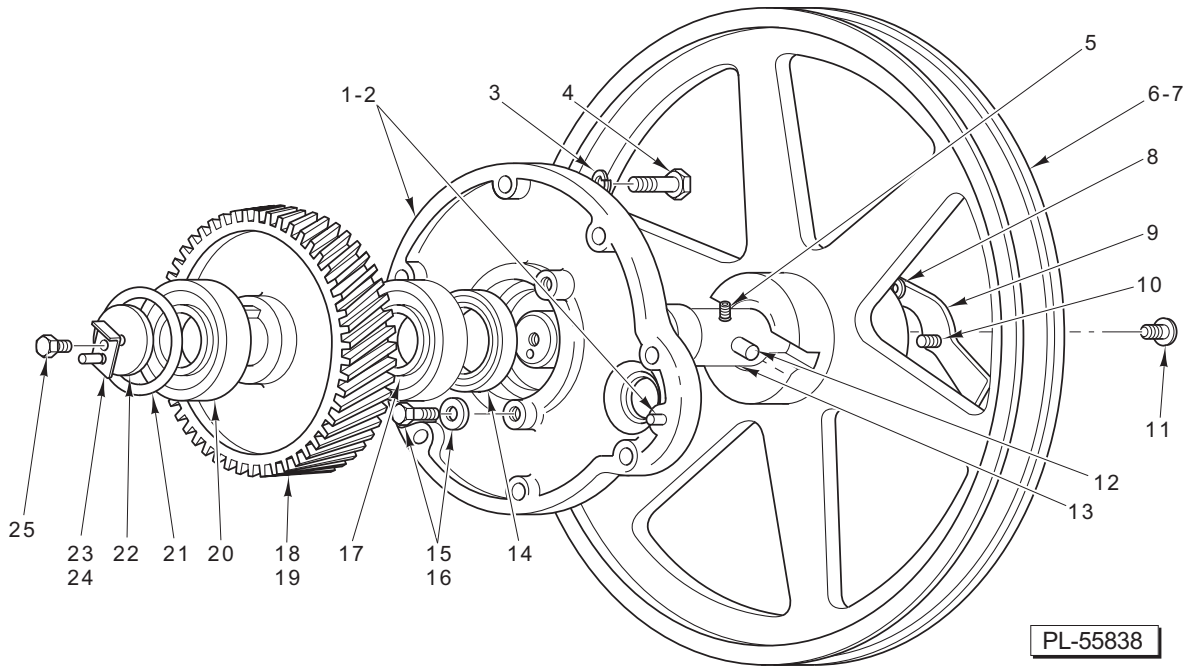


PL-55836

**DRIVE AND TENSION ADJUSTMENT UNIT
(MODEL 6801 ML-134094)**

**DRIVE AND TENSION ADJUSTMENT UNIT
(MODEL 6801 ML-134094)**

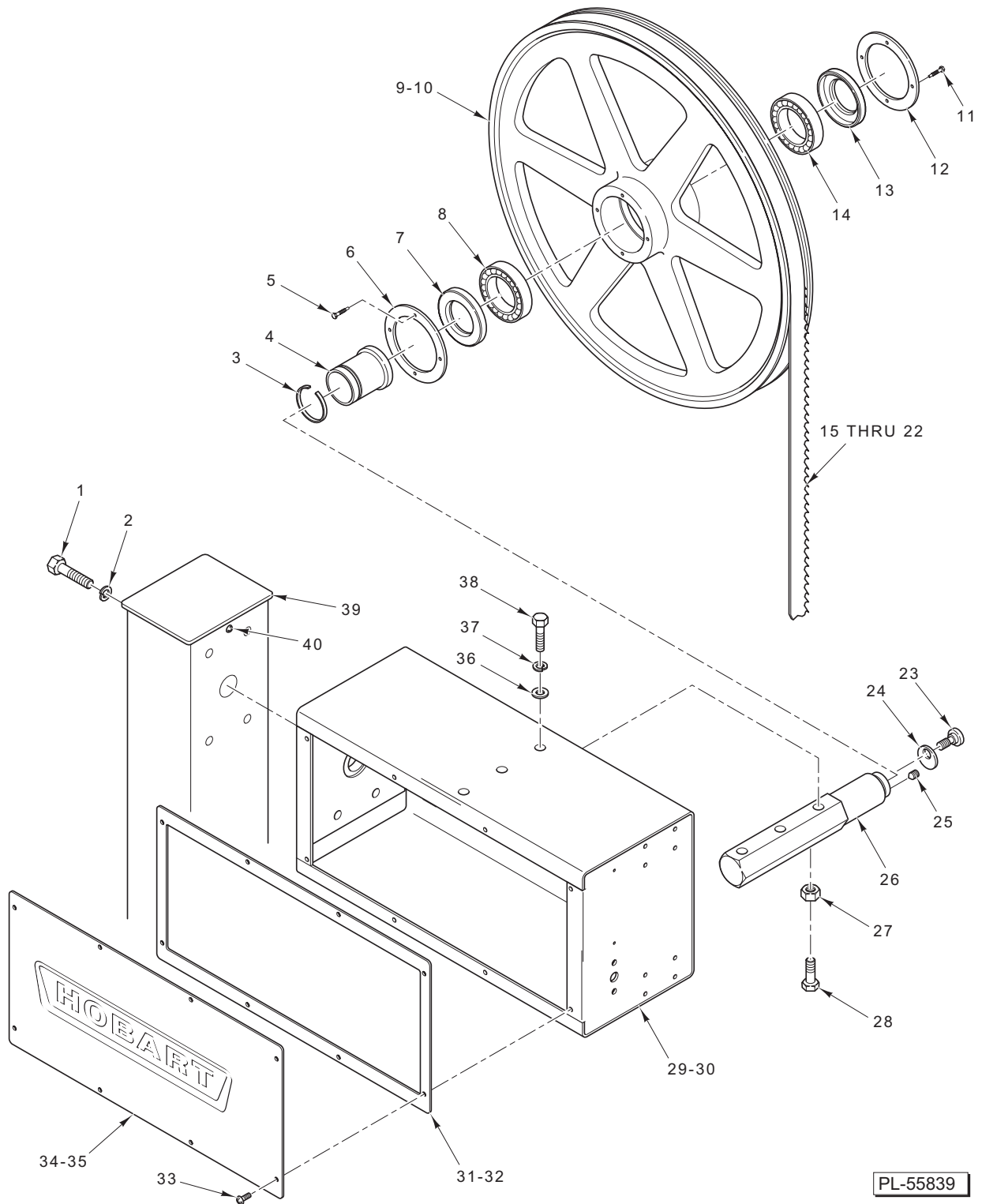
ILLUS. PL-55836	PART NO.	NAME OF PART	AMT.
1	00-873696-00001	Column & Label Assy.....	1
2	00-292286-00002	Transmission Support Assy. (Incls. Item 3).....	1
3	00-011800-00118	Dowel.....	1
4	00-290832	Pivot – Tension Adjusting.....	2
5	RP-002-07	Roll Pin ³ / ₁₆ x 1 ¹ / ₄ Lg. (SST).....	1
6	00-875670	Knob – Tension Adjust.....	1
7	00-873500	Tensioner Assy. (Incls. Items 5, 6, 8, & 37).....	1
8	BN-005-06	Needle Bearing – Torrington NTA-1018.....	1
9	00-290832	Pivot – Tension Adjusting.....	2
10	00-291859-00001	Bushing ¹ / ₂ Lg.....	1
11	00-120971	Plug – Vent.....	1
12	00-875137	Gear Case Assy.....	1
13	SC-041-31	Cap Screw ³ / ₈ -16 x 1 ¹ / ₄ Hex Hd.....	3
14	WL-019-85	Lockwasher.....	3
15	WS-021-20	Washer.....	1
16	SC-036-93	Cap Screw ⁷ / ₁₆ -20 x ³ / ₄ Hex Hd.....	1
17	NS-046-29	Lock Nut ³ / ₄ -16 Flexlox.....	1
18	SL-005-02	Spring – Loading.....	1
19	00-290866	Washer – Damper.....	1
20	00-875043	Pinion – Drive (16T).....	1
21	00-109070-00008	Key.....	1
22	SL-005-02	Spring – Loading.....	6
23	SC-027-29	Mach. Screw 8-32 x ³ / ₈ Rd. Hd.....	AR
24	WL-010-01	Lockwasher #8 External Shakeproof.....	AR
25	NS-010-11	Nut 8-32 Hex (Brass).....	AR
26	SC-040-21	Cap Screw ³ / ₈ -16 x ⁷ / ₈ Soc. Hd.....	4
27	WL-006-28	Lockwasher ³ / ₈ Helical.....	4
28	SD-038-03	Self-Tapping Screw 10-16 x ³ / ₄ Truss Hd.....	2
29	00-479134	End Cap.....	1
30	00-437301-00001	Motor (60 Hz.) (3 Ph.).....	1
31	00-479005	Motor (1 Ph.).....	1
32	00-873986	Screw Shoulder.....	1
33	00-291859-00002	Bushing ¹ / ₂ Lg.....	2
34	SC-040-21	Cap Screw ³ / ₈ -16 x ⁷ / ₈ Soc. Hd.....	5
35	WS-018-04	Washer.....	5
36	PB-005-15	Plug Button.....	13
37	BB-021-45	Bearing – Thrust 0.6371.....	1



LOWER PULLEY UNIT

LOWER PULLEY UNIT

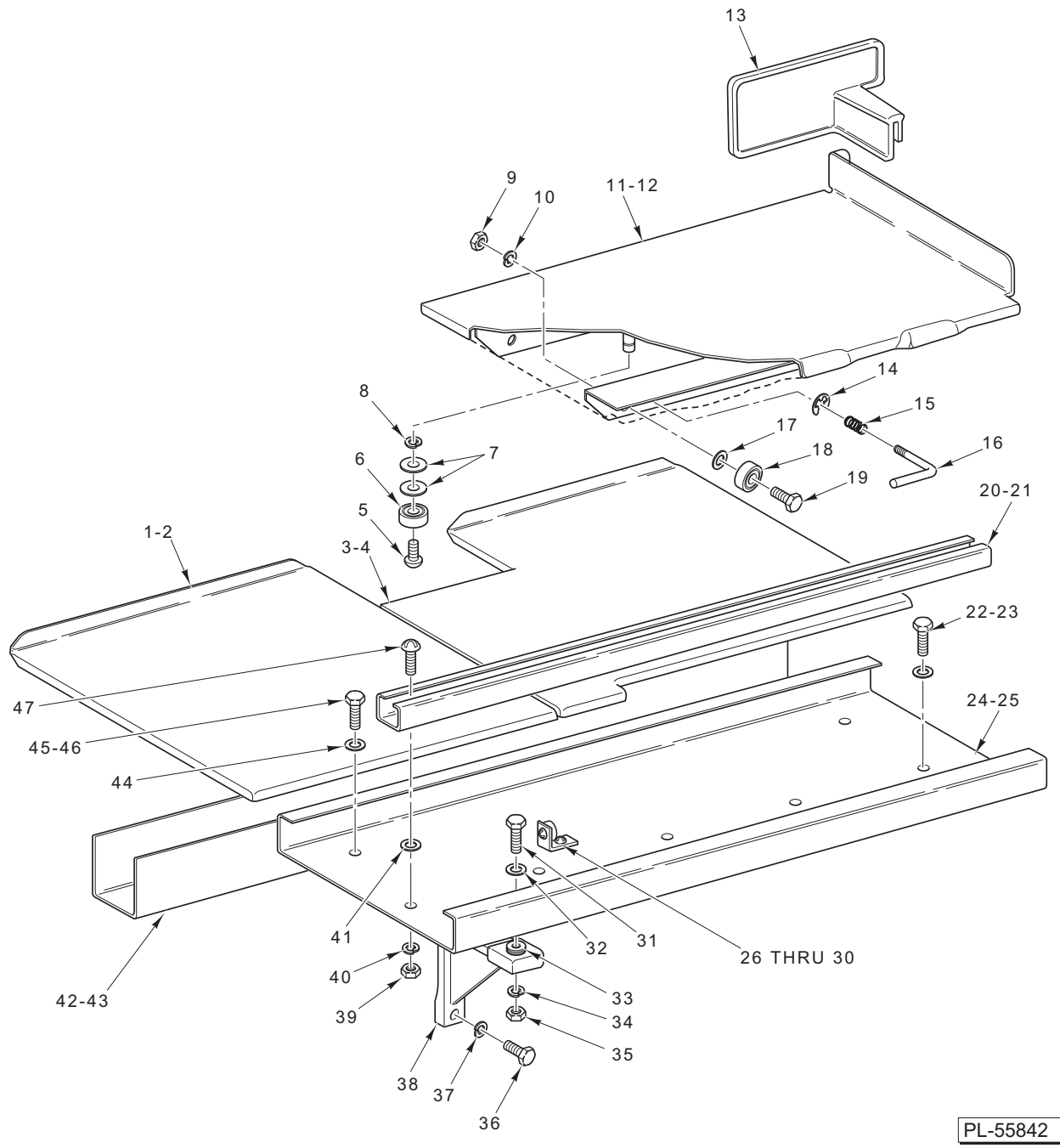
ILLUS. PL-55838	PART NO.	NAME OF PART	AMT.
1	00-290817-00002	Gear Case Cover Assy. (Incls. Item 2).....	1
2	00-011800-00091	Dowel.....	2
3	WL-006-22	Lockwasher ⁵ / ₁₆ Light.....	7
4	SC-041-15	Cap Screw ⁵ / ₁₆ -18 x 1 ¹ / ₄ Hex Hd.....	7
5	SC-119-20	Set Screw ¹ / ₄ -20 x ¹ / ₂ Soc. Hdls., Flat Pt.....	1
6	ML-134098-0000Z	Pulley and Latch Assy. (Incls. Items 8, 9, & 10) (Model 6614 ML-134096).....	1
7	ML-109653-0000Z	Pulley and Latch Assy. (Incls. Items 8, 9, & 10) (Model 6801 ML-134094).....	1
8	00-079686	Catch – Friction.....	1
9	00-875150	Latch.....	1
10	00-020851	Screw – Latch.....	1
11	SD-005-49	Self-Tapping Screw 12 x ¹ / ₂ Rd. Hd., Type U.....	1
12	00-436447	Drive Pin.....	1
13	00-292278	Shaft – Lower.....	1
14	00-290805	Seal – Shaft.....	1
15	SC-062-59	Cap Screw ⁵ / ₁₆ -18 x ⁵ / ₈ Hex Hd.....	3
16	WS-018-19	Washer.....	3
17	BB-007-21	Ball Bearing.....	1
18	00-875044-00002	Gear – Drive (58T).....	1
19	00-109070-00009	Key.....	1
20	BB-007-21	Ball Bearing.....	1
21	SL-003-11	Spring – Loading ND 72.....	2
22	00-291973-00002	Retainer – Shaft.....	1
23	00-291624	Retainer – Lock.....	1
24	RP-003-18	Roll Pin ¹ / ₈ x ⁷ / ₈ Lg.....	1
25	SC-041-13	Cap Screw ⁵ / ₁₆ -18 x 2.....	1



UPPER BEARING CARRIER UNIT

UPPER BEARING CARRIER UNIT

ILLUS.	PART NO.	NAME OF PART	AMT.
	PL-55839		
1	SC-040-21	Cap Screw $\frac{3}{8}$ -16 x $\frac{7}{8}$ Soc. Hd.	4
2	WL-006-28	Lockwasher $\frac{3}{8}$ Helical	4
3	RR-004-13	Retaining Ring (Truarc)	1
4	00-479143	Bushing – Pulley	1
5	SC-067-06	Mach. Screw 10-24 x $\frac{1}{2}$ Hex Hd.	4
6	00-873461-00002	Cover – Rear Pulley	1
7	00-873501	Seal – Shaft	1
8	BB-015-36	Ball Bearing – NSK 6007 DDUCE1SRIS	1
9	ML-134048-0000Z	Pulley Assy. – Upper (Incls. Items 3 thru 8, & 11 thru 14) (Model 6614 ML-134096)	1
10	ML-104999-0000Z	Pulley Assy. – Upper (Incls. Items 3 thru 8, & 11 thru 14) (Model 6801 ML-134094)	1
11	SC-067-06	Mach. Screw 10-24 x $\frac{1}{2}$ Hex Hd.	4
12	00-873461-00001	Cover – Front Pulley	1
13	00-873502	Seal – Shaft	1
14	BB-015-36	Ball Bearing – NSK 6007 DDUCE1SRIS	1
15	00-477011-00126	Blade – Saw ($\frac{5}{8}$ In. Wd. x 0.022 Thk.) (3T) (Model 6614 ML-134096)	1
16	00-477016-00126	Blade – Saw ($\frac{5}{8}$ In. Wd. x 0.022 Thk.) (4T) (Model 6614 ML-134096)	1
17	00-477086-00126	Blade – Saw ($\frac{5}{8}$ In. Wd. x 0.025 Thk.) (Scalloped) (Model 6614 ML-134096)	1
18	00-477011-00142	Blade – Saw ($\frac{5}{8}$ In. Wd. x 0.022 Thk.) (3T) (Model 6801 ML-134094)	1
19	00-477016-00142	Blade – Saw ($\frac{5}{8}$ In. Wd. x 0.022 Thk.) (4T) (Model 6801 ML-134094)	1
20	00-477086-00142	Blade – Saw ($\frac{5}{8}$ In. Wd. x 0.025 Thk.) (Scalloped) (Model 6801 ML-134094)	1
21	00-290868-00001	Blade – Saw ($\frac{5}{8}$ In. Wd. x 0.022 Thk.) (4T) (Model 6801 ML-134094)	1
22	00-875188-00001	Blade – Saw ($\frac{5}{8}$ In. Wd. x 0.022 Thk.) (4T) (Model 6614 ML-134096)	1
23	00-020851	Screw – Latch	1
24	00-479142	Retainer – Pulley	1
25	00-079686	Catch – Friction	1
26	00-479144	Shaft – Upper	1
27	NS-018-14	Jam Nut $\frac{3}{8}$ -16 Hex	2
28	SC-127-03	Cap Screw – $\frac{3}{8}$ -16 x $1\frac{3}{4}$ Hex Hd.	2
29	00-875072	Box Column Assy. (Model 6614 ML-134096)	1
30	00-875227	Box Column Assy. (60 Hz.) (Model 6801 ML-134094)	1
31	00-875080	Gasket – Column Box (Model 6614 ML-134096)	1
32	00-873820	Gasket – Column Box (Model 6801 ML-134094)	1
33	SC-025-33	Mach. Screw 8-32 x $\frac{1}{2}$ Bndg. Hd.	8
34	00-875077	Cover – Column Box (Model 6614 ML-134096)	1
35	00-479672	Cover – Column Box (60 Hz.) (Model 6801 ML-134094)	1
36	WS-018-40	Washer (Model 6614 ML-134096)	3
37	WL-006-27	Lockwasher $\frac{3}{8}$ Light	3
38	SC-041-31	Cap Screw $\frac{3}{8}$ -16 x $1\frac{1}{4}$ Hex Hd.	3
39	00-479134	End Cap	1
40	SD-038-03	Self-Tapping Screw 10-16 x $\frac{3}{4}$ Truss Hd.	2

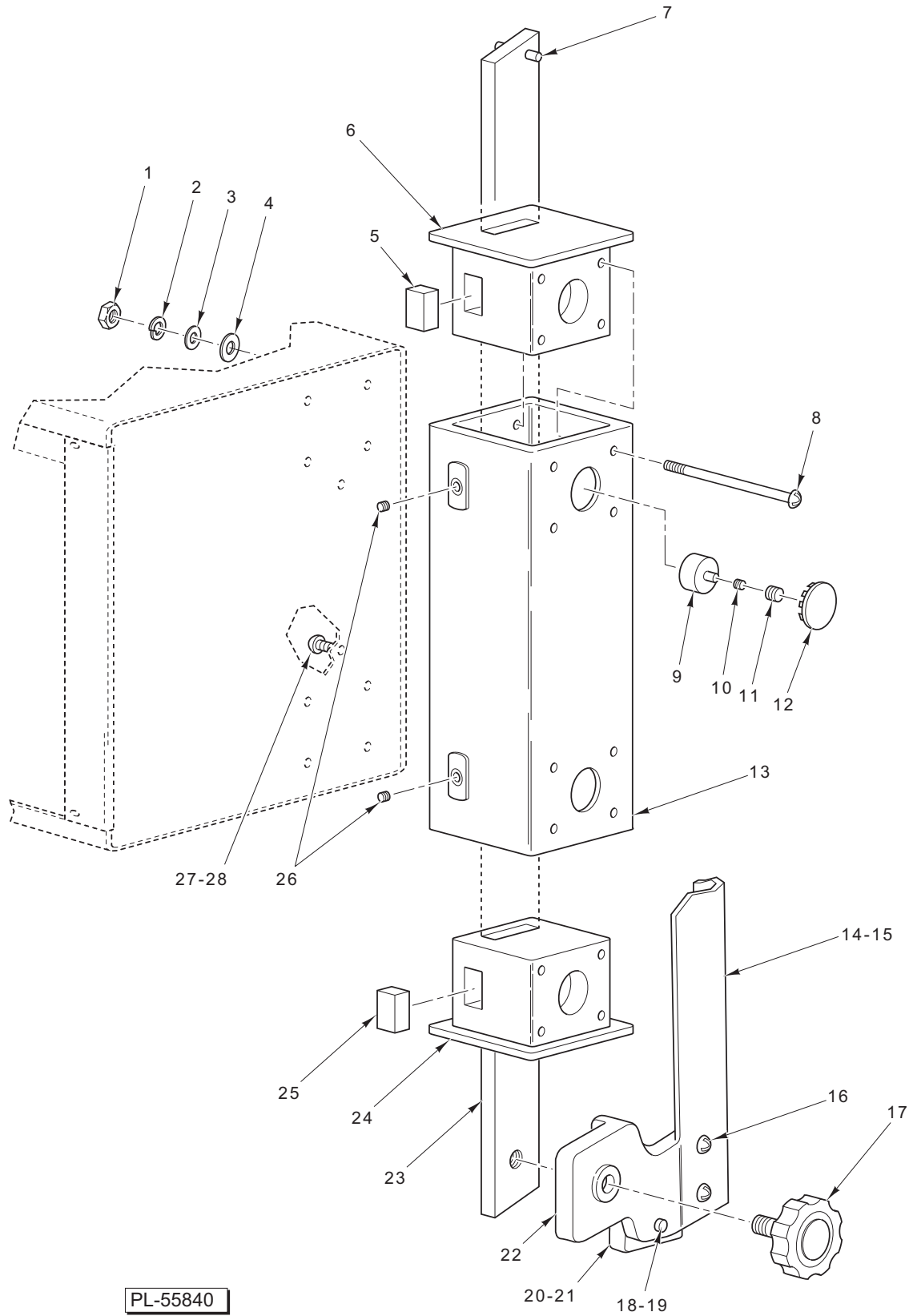


PL-55842

TABLES AND CARRIAGE UNIT

TABLES AND CARRIAGE UNIT

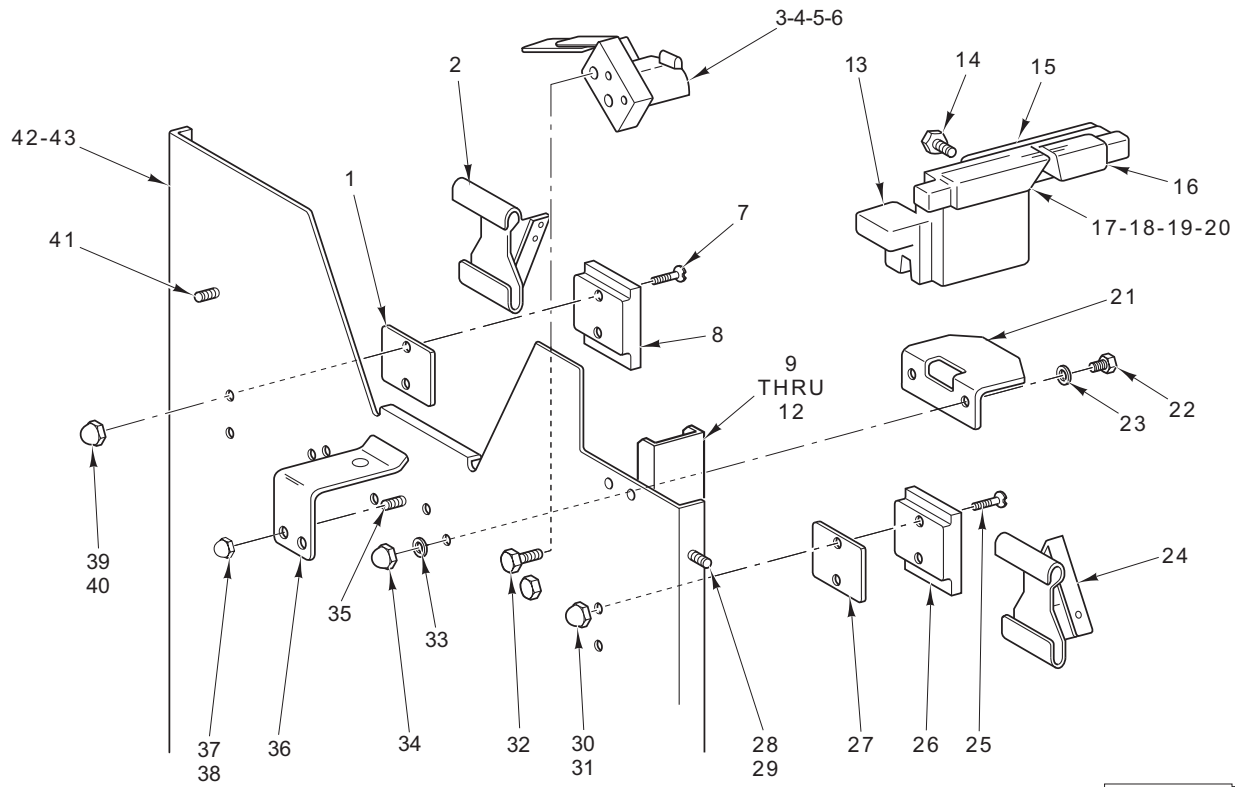
ILLUS. PL-55842	PART NO.	NAME OF PART	AMT.
1	00-290771	Table – Left Assy. (Model 6801 ML-134094)	1
2	00-875066	Table – Left Assy. (Model 6614 ML-134096)	1
3	00-291654	Table – Right Assy. (Model 6801 ML-134094)	1
4	00-875068	Table – Right Assy. (Model 6614 ML-134096)	1
5	SC-041-30	Cap Screw $\frac{3}{8}$ -16 x 1 Hex Hd. (SST)	2
6	BB-008-11	Ball Bearing – Nice #SK-T 4725	2
7	WS-018-30	Washer	4
8	WL-006-28	Lockwasher $\frac{3}{8}$ Medium	2
9	NS-046-09	Stop Nut $\frac{3}{8}$ -16 Elastic	4
10	WL-006-27	Lockwasher $\frac{3}{8}$ Light	4
11	00-437469	Carriage Assy. (Incls. Items 5 thru 10 & 14 thru 19) (Model 6801 ML-134094)	1
12	00-875136	Carriage Assy. (Incls. Items 5 thru 10 & 14 thru 19) (Model 6614 ML-134096)	1
13	00-291435	Pusher Plate	1
14	RR-011-09	Retaining Ring	1
15	00-290787	Spring – Carriage Lock	1
16	00-290795	Lever – Carriage Lock	1
17	WS-018-34	Washer (Model 6801 ML-134094)	4
18	BB-008-11	Ball Bearing – Nice #SK-T 4725	4
19	SC-041-30	Cap Screw $\frac{3}{8}$ -16 x 1 Hex Hd.	4
20	00-437476	Guide – Roller (Model 6801 ML-134094)	1
21	00-875089	Guide – Roller (Model 6614 ML-134096)	1
22	SC-041-29	Cap Screw $\frac{3}{8}$ -16 x $\frac{7}{8}$ Hex Hd. Wax Coated Threads (Model 6614 ML-134096)	2
23	WS-018-40	Washer (Model 6614 ML-134096)	2
24	00-873798	Support – Carriage (Model 6801 ML-134094)	1
25	00-875091	Support – Carriage (Model 6614 ML-134096)	1
26	00-479107	Stop – Carriage	2
27	SC-124-44	Bolt – Sq. Neck $\frac{5}{16}$ -18 x $\frac{3}{4}$ Rd. Hd.	2
28	NS-036-19	Stop Nut $\frac{5}{16}$ -18 Elastic	2
29	00-873789	Bumper – Carriage Stop	2
30	WL-006-23	Lockwasher $\frac{5}{16}$ Medium (SST)	2
31	SC-041-33	Cap Screw $\frac{3}{8}$ -16 x 1 $\frac{3}{4}$ Hex Hd. (SST) (Model 6801 ML-134094)	2
32	WS-018-40	Washer (Model 6801 ML-134094)	2
33	00-292284	Screw – Jack (Model 6801 ML-134094)	2
34	WL-006-27	Lockwasher $\frac{3}{8}$ Light (Model 6801 ML-134094)	2
35	NS-018-14	Jam Nut $\frac{3}{8}$ -16 Hex (Model 6801 ML-134094)	2
36	SC-041-31	Cap Screw $\frac{3}{8}$ -16 x 1 $\frac{1}{4}$ Hex Hd. (Model 6801 ML-134094)	2
37	WL-006-27	Lockwasher $\frac{3}{8}$ Light (Model 6801 ML-134094)	2
38	00-291958-00002	Brace – Carriage Support (Model 6801 ML-134094)	2
39	NS-015-11	Nut $\frac{5}{16}$ -18 Hex	5
40	WL-006-23	Lockwasher $\frac{5}{16}$ Medium (SST)	5
41	WS-017-21	Washer	5
42	00-290790	Tray – Scrap (Model 6801 ML-134094)	1
43	00-875065	Tray – Scrap (Model 6614 ML-134096)	1
44	WS-018-40	Washer	2
45	SC-041-29	Cap Screw $\frac{3}{8}$ -16 x $\frac{7}{8}$ Hex Hd. Wax Coated Threads (Model 6801 ML-134094)	2
46	SC-041-34	Cap Screw $\frac{3}{8}$ -16 x 2 Hex Hd. (Model 6614 ML-134096)	2
47	SC-124-44	Bolt – Sq. Neck $\frac{5}{16}$ -18 x $\frac{3}{4}$ Rd. Hd.	5



UPPER GUIDE UNIT

UPPER GUIDE UNIT

ILLUS.	PART NO.	NAME OF PART	AMT.
PL-55840			
1	NS-011-12	Nut 8-32 Hex.....	8
2	WL-014-05	Lockwasher #8 External Shakeproof.....	8
3	WS-023-22	Washer.....	8
4	WS-031-35	Washer.....	8
5	00-479766	Slide Lock	1
6	00-478999	Guide Bar Insert.....	1
7	PG-007-16	Groove Pin ³ / ₁₆ Dia. x ³ / ₄ Lg.	1
8	SC-021-17	Mach. Screw 8-32 x 2 ¹ / ₂ Rd. Hd.....	8
9	00-120141	Shoe – Slide Rod	2
10	00-873782	Spring – Slide Rod.....	2
11	SC-046-70	Set Screw ³ / ₈ -16 x ¹ / ₂ Hdls., Cup Pt.....	2
12	PB-005-09	Plug Button	2
13	00-478998	Support – Guide Bar	1
14	00-875056	Guard – Front Blade (Model 6614 ML-134096).....	1
15	00-291441	Guard – Front Blade (Model 6801 ML-134094).....	1
16	SC-053-05	Mach. Screw 10-24 x ³ / ₈ Truss Hd., Slotted	2
17	00-435958-00002	Knob – Adjusting	1
18	SC-041-02	Cap Screw ¹ / ₄ -20 x 1 Hex Hd. (Lower Guide)	1
19	00-291579	Washer – Guide	1
20	00-290844-00001	Guide – Saw Blade (0.022" Blade)	1
21	00-290844-00002	Guide – Saw Blade (0.014" Blade)	1
22	00-290842	Holder – Upper Guide.....	1
23	00-873204	Upper Guide Support Bar Assy (Incls. Item 7).....	1
24	00-478999	Guide Bar Insert.....	1
25	00-479766	Slide Lock	1
26	SC-055-01	Set Screw 10-24 x ¹ / ₄ Soc. Hdls., Cup Pt. (SST)	2
27	SC-025-33	Mach. Screw 8-32 x ¹ / ₂ Bndg. Hd.....	2
28	NS-011-12	Nut 8-32 Hex.....	2
	00-291442	Guide Assy. – Upper (Incls. Items 15, 16, & 22) (Model 6801 ML-134094).....	1
	00-875135	Guide Assy. – Upper (Incls. Items 14, 16, & 22) (Model 6614 ML-134096).....	1

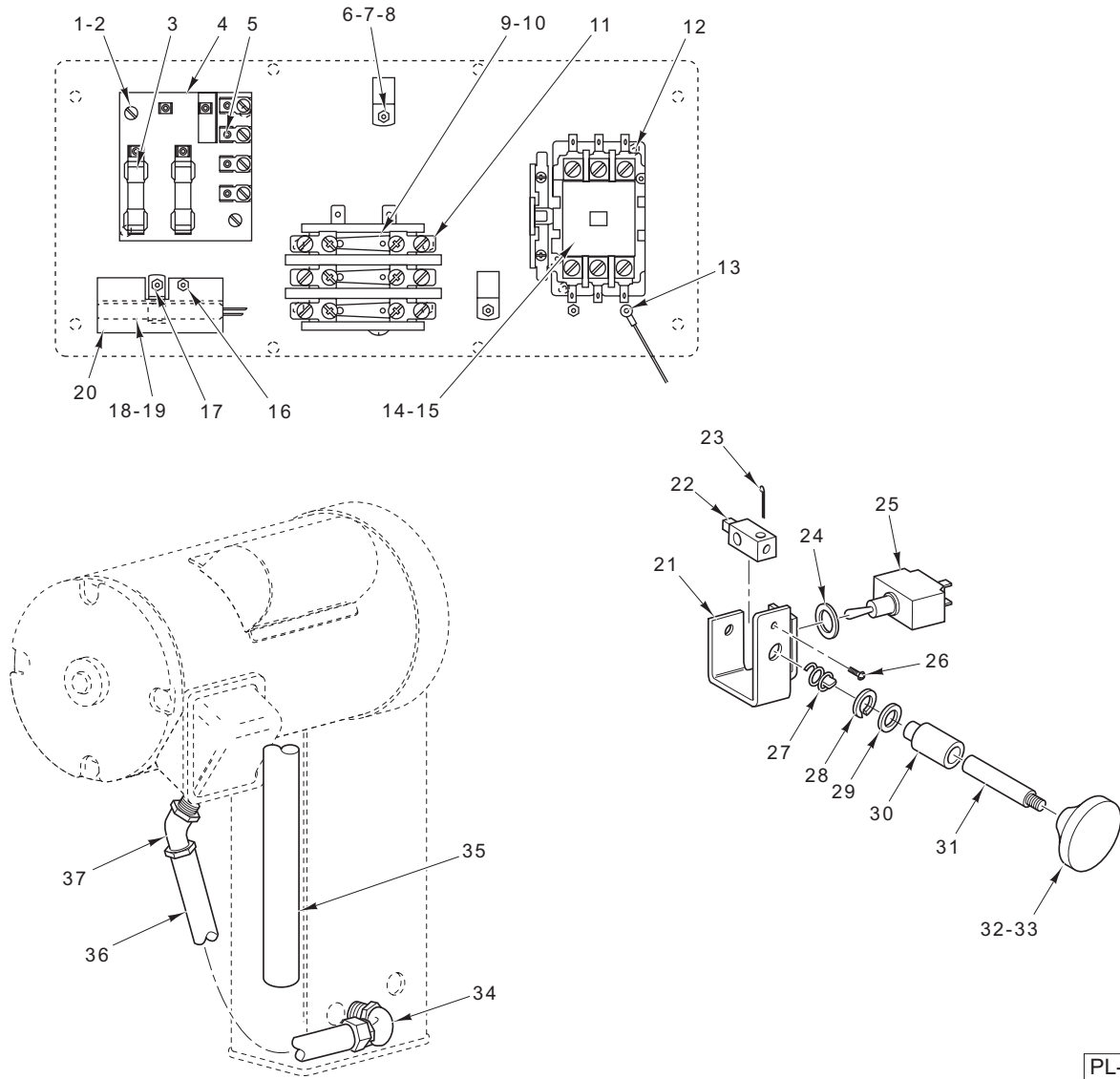


PL-55841

LOWER WIPER UNIT

LOWER WIPER UNIT

ILLUS.	PART NO.	NAME OF PART	AMT.
	PL-55841		
1	00-290855	Shim – Wiper Support.....	AR
2	00-290798	Blade Wiper Assy.....	1
3	00-291831	Block – Pulley Wiper.....	1
4	00-102399	Pulley Wiper Assy. (Incls. Items 5 & 6).....	1
5	00-123886	Wiper – Pulley.....	1
6	SC-053-01	Mach. Screw 10-24 x 1/4 Truss Hd.	2
7	SC-022-34	Mach. Screw 1/4-20 x 7/8 Slotted Flat Hd. (SST).....	2
8	00-290822	Support – Wiper.....	1
9	00-291809	Shield – Blade Guide.....	1
10	SC-041-86	Cap Screw 1/4-20 x 3/8 Hex Hd.....	2
11	WS-003-49	Washer.....	2
12	NS-025-04	Acorn Nut 1/4-20.....	2
13	00-875234-00002	Holder – Lower Guide.....	1
14	SC-116-26	Cap Screw 1/4-28 x 7/8 Hex Hd.....	2
15	00-875235	Cover – Guide.....	1
16	00-291658	Guide – Plastic.....	1
17	00-291670-00001	Guide – Saw Blade (0.022" Blade).....	1
18	00-291670-00002	Guide – Saw Blade (0.014" Blade).....	1
19	00-291670-00003	Guide – Saw Blade (0.038" Blade).....	1
20	00-291670-00004	Guide – Saw Blade (0.020" Blade).....	1
21	00-875246	Support.....	1
22	SC-041-50	Cap Screw 1/4-20 x 1/2 Hex Hd.....	2
23	WS-003-49	Washer.....	AR
24	00-290798	Blade Wiper Assy.....	1
25	SC-022-34	Mach. Screw 1/4-20 x 7/8 Slotted Flat Hd. (SST).....	2
26	00-290822	Support – Wiper.....	1
27	00-290855	Shim – Wiper Support.....	AR
28	SC-041-50	Cap Screw 1/4-20 x 1/2 Hex Hd.....	2
29	WS-003-49	Washer.....	2
30	NS-025-04	Acorn Nut 1/4-20.....	2
31	WS-003-49	Washer.....	2
32	SC-041-86	Cap Screw 1/4-20 x 3/8 Hex Hd.....	2
33	WL-006-17	Lockwasher 1/4 Medium (Model 6614 ML-134096).....	2
34	NS-025-04	Acorn Nut 1/4-20.....	2
35	SC-025-07	Mach. Screw 10-24 x 5/16 Bndg. Hd.....	2
36	00-290788	Clip – Cover.....	1
37	NS-025-01	Nut – Crown 10-24.....	2
38	WL-006-06	Lockwasher #10 Light.....	2
39	NS-025-04	Acorn Nut 1/4-20.....	2
40	WS-003-49	Washer.....	2
41	SC-041-50	Cap Screw 1/4-20 x 1/2 Hex Hd.....	2
42	00-875082	Baffle – Lower Pulley (Model 6614 ML-134096).....	2
43	00-290851-00002	Baffle – Lower Pulley (Model 6801 ML-134094).....	1
	00-291672-00001	Holder & Guide Assy. (Incls. Items 13 thru 17).....	1
	00-291672-00002	Holder & Guide Assy. (Incls. Items 13 thru 16 & 18).....	1
	00-291672-00003	Holder & Guide Assy. (Incls. Items 13 thru 16 & 19).....	1
	00-291672-00004	Holder & Guide Assy. (Incls. Items 13 thru 16 & 20).....	1



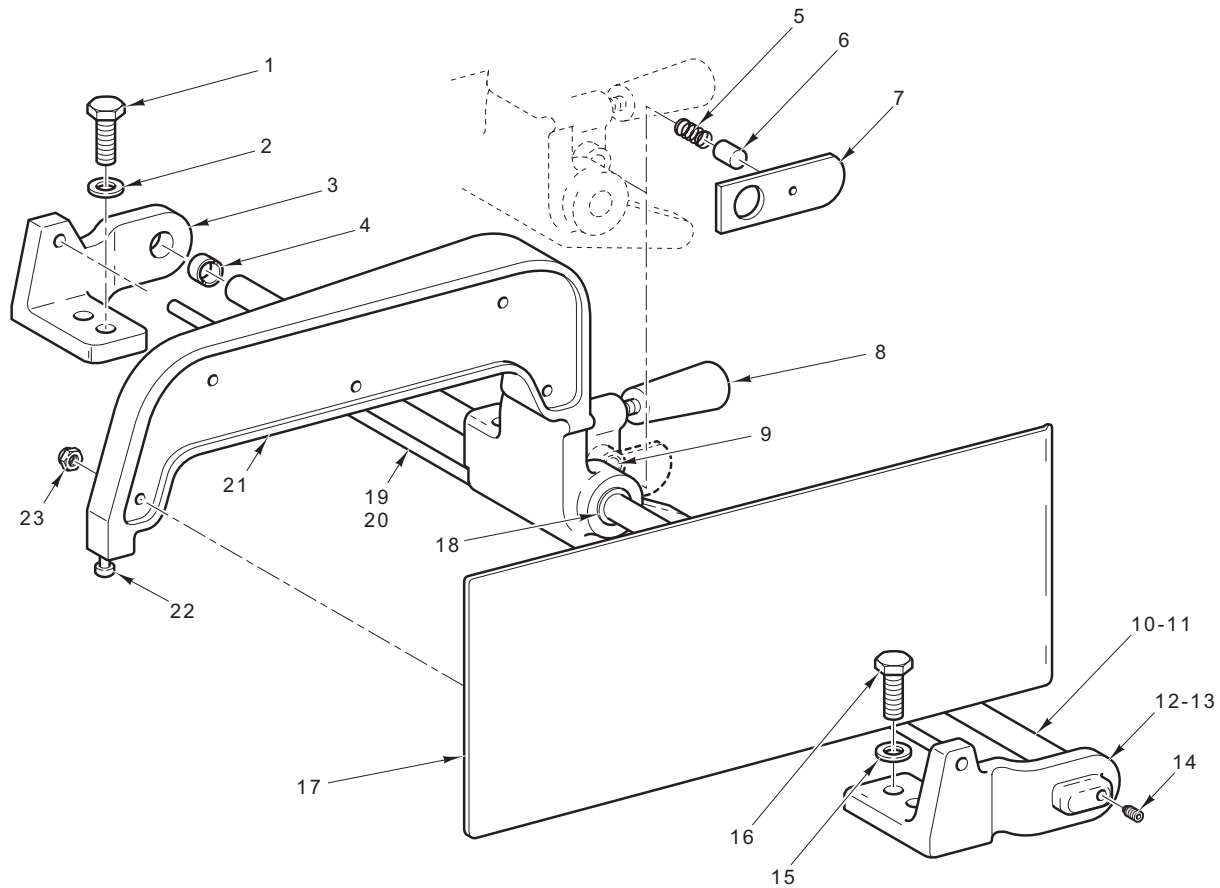
PL-55843

ELECTRICAL UNIT

ELECTRICAL UNIT

ILLUS.	PART NO.	NAME OF PART	AMT.
PL-55843			
1	SC-025-33	Mach. Screw 8-32 x 1/2 Bndg. Hd.....	2
2	NS-048-85	Nut Assy. 8-32.....	2
3	FE-019-48	Fuse (0.8 Amp., 600 V.).....	2
4	00-120907-00001	Transformer (50 VA.).....	1
5	00-114707	Fuse Board.....	1
6	NS-011-12	Nut 8-32 Hex.....	3
7	WS-023-22	Washer.....	3
8	00-078752-00009	Clamp – Cable.....	3
*9	-	Heater – Element (Overload Relay).....	AR
10	00-088196-009-1	Relay – Thermal Overload (3 Ph.) (W/Overload Protection).....	1
11	SD-015-20	Self-Tapping Screw 10-32 x 3/8 Phil. Pan Hd., Type TT.....	2
12	SD-015-20	Self-Tapping Screw 10-32 x 3/8 Phil. Pan Hd., Type TT.....	2
13	00-290889	Cable & Eyelet Assy. (Panel to Column).....	1
14	00-087713-102-1	Contactory Assy. (3-Pole) (200-230 V.).....	1
15	00-087713-102-2	Contactory Assy. (3-Pole) (460 V.).....	1
16	SD-015-20	Self-Tapping Screw 10-32 x 3/8 Phil. Pan Hd., Type TT.....	2
17	00-108199-00001	Clamp – Air Heater.....	1
18	00-122345-00001	Heater Assy. (460 V.).....	1
19	00-122345-00002	Heater Assy. (200-230 V.).....	1
20	00-121543	Shield – Heater.....	1
21	00-123241-00001	Bracket – Switch.....	1
22	00-873781	Actuator Switch.....	1
23	PC-005-08	Cotter Pin 3/32 x 5/8 Lg.....	1
24	00-121827	Ring – Locking.....	1
25	00-875567	Switch Assy.....	1
26	SC-053-05	Mach. Screw 10-24 x 5/8 Truss Hd.....	2
27	00-121547	Spring – Compression.....	1
28	00-875049	Retaining Ring.....	1
29	WS-018-30	Washer.....	1
30	00-290883	Bushing – Switch Shaft.....	1
31	00-290882	Shaft – Switch.....	1
32	00-291475	Label – Start/Stop.....	1
33	00-290885	Knob – Switch.....	1
34	FE-026-13	Connector 1/2 (Metallic) Sealite.....	1
35	00-557247	Conduit – Electrical.....	1
36	00-543430	Conduit – Electrical.....	1
37	FE-026-13	Connector 1/2 (Metallic) Sealite.....	1

*Give Elec. Spec., Mach. Model, & Motor Type.



PL-55844

GAUGE PLATE UNIT

ILLUS.	PART NO.	NAME OF PART	AMT.
	PL-55844		
1	SC-041-31	Cap Screw ³ / ₈ -16 x 1 ¹ / ₄ Hex Hd.....	2
2	WS-018-40	Washer.....	2
3	00-873713-00002	Support – Rear Rod.....	1
4	00-479644	Bearing – Sleeve.....	2
5	00-291933	Spring – Gauge Plate Lock.....	1
6	00-291932	Pin – Locking Lever.....	1
7	00-290769	Lever – Locking.....	1
8	00-070194	Handle – Gauge Plate.....	1
9	00-110544-00010	Bushing – Gauge Plate Frame.....	1
10	00-290770-00003	Shaft – Gauge Plate (Model 6614 ML-134096).....	1
11	00-290770	Shaft – Gauge Plate (Model 6801 ML-134094).....	1
12	00-873712-00002	Front Shaft & Rod Support Assy. (Incls. Items 13 & 14).....	1
13	PG-006-11	Pin – Groove ¹ / ₄ x ⁵ / ₈ Type D.....	1
14	SC-064-27	Set Screw ⁵ / ₁₆ -18 x ¹ / ₂ Soc. Hdls., Cup Pt. Nylok.....	1
15	WS-018-40	Washer.....	2
16	SC-041-31	Cap Screw ³ / ₈ -16 x 1 ¹ / ₄ Hex Hd.....	2
17	00-291431	Plate and Stud Assy.....	1
18	00-110544-00009	Bushing – Gauge Plate Frame.....	2
19	00-290758-00004	Rod – Table Anchor (Right Table) (Model 6614 ML-134096).....	1
20	00-290758-00002	Rod – Table Anchor (Right Table) (Model 6801 ML-134094).....	1
21	00-291944	Gauge Plate Assy. (Incls. Items 9, 17, 18, 22, & 23).....	1
22	00-290764	Button – Glide.....	1
23	NS-025-04	Acorn Nut ¹ / ₄ -20.....	5
	00-292347	Gauge Plate Assy. (Incls. Items 5, 6, 7, 17, 21, & 22) (Packaged).....	1